

Manual valves

art. VD/VS/VCR 2xx



The manual valves are used to intercept the flow of fluid to the heating body. The adjustment can be made by turning the knob clockwise to decrease the flow, or anti-clockwise to increase it.

■ TECHNICAL FEATURES

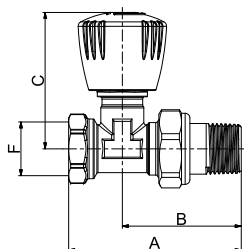
Max. operating temperature: 120 °C
Max. operating pressure: 10 bar

■ MATERIALS

Brass parts: CW617N
Seal parts: peroxide EPDM
Knob: ABS

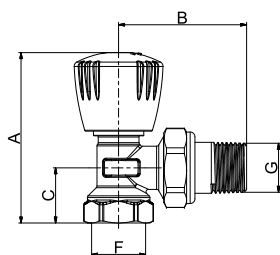
■ INGOMBRI

Straight valve with connection for iron pipe



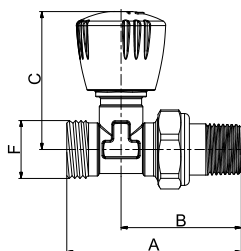
ART.	COD.	SIZE	A	B	C	F	G
VD 201	501451	DN 10	67	46	57	3/8"	3/8"
VD 201	501452	DN 15	73	50	57	1/2"	1/2"
VD 201	501453	DN 20	86	58	57	3/4"	3/4"

Angle valve with connection for iron pipe



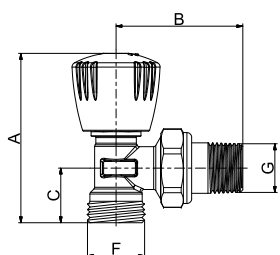
ART.	COD.	SIZE	A	B	C	F	G
VS 202	501456	DN 10	71	49	20.5	3/8"	3/8"
VS 202	501457	DN 15	73.5	53	23	1/2"	1/2"
VS 202	501458	DN 20	73.5	63	23	3/4"	3/4"

Straight valve with connection for copper pipe



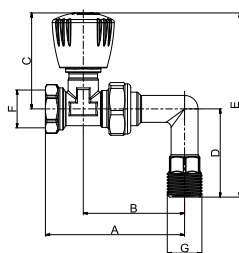
ART.	COD.	SIZE	A	B	C	F	G
VD 203	501454	M24×1.5	72	50	57	M24×1.5	1/2"
VD 205	501459	EUROKONUS	72	50	57	3/4"	1/2"

Angle valve with connection for copper pipe



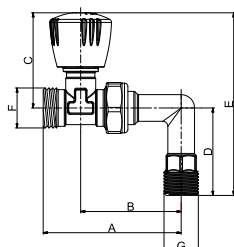
ART.	COD.	SIZE	A	B	C	F	G
VS 204	501566	M24×1.5	73.5	53	23	M24×1.5	1/2"
VS 206	501567	EUROKONUS	73.5	53	23	3/4"	1/2"

Straight valve with connection for iron pipe and angle fitting



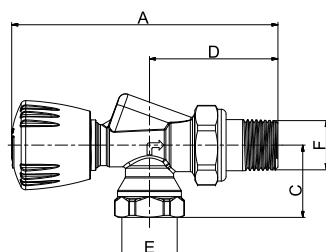
ART.	COD.	SIZE	A	B	C	D	E	F	G
VD 211	501573	DN 15	94	66.5	57	52.5	104.5	1/2"	1/2"

Straight valve with connection for copper pipe and angle fitting



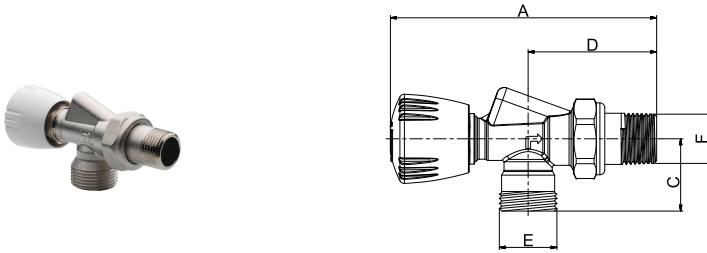
ART.	COD.	SIZE	A	B	C	D	E	F	G
VD 213	501568	M24×1.5	94	66.5	57	52.5	104	M24×1.5	1/2"
VD 215	501569	EUROKONUS	94	66.5	57	52.5	104	3/4"	1/2"

Reverse valve with connection for iron pipe



ART.	COD.	SIZE	A	C	D	E	F
VCR 232	501638	DN 15	110.5	30	53.5	1/2"	1/2"

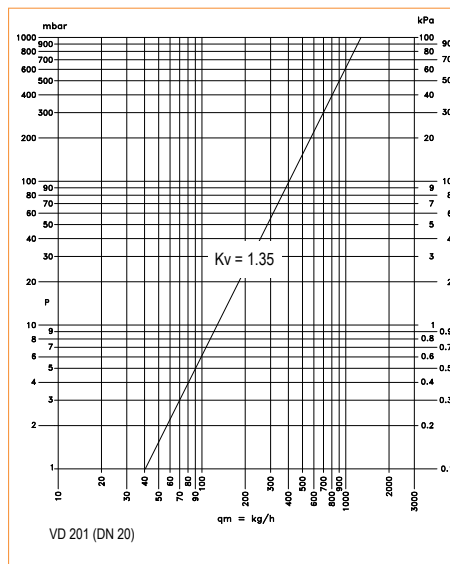
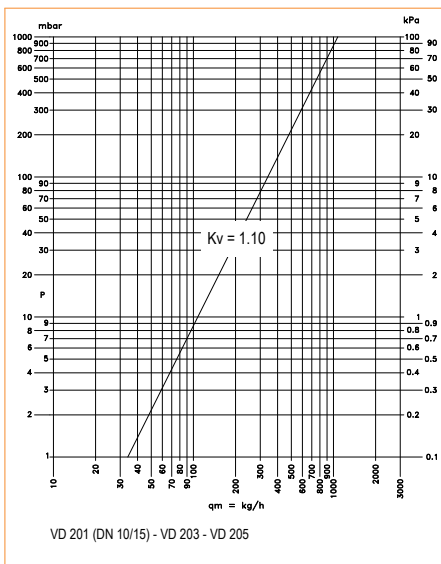
Reverse valve with connection for copper pipe



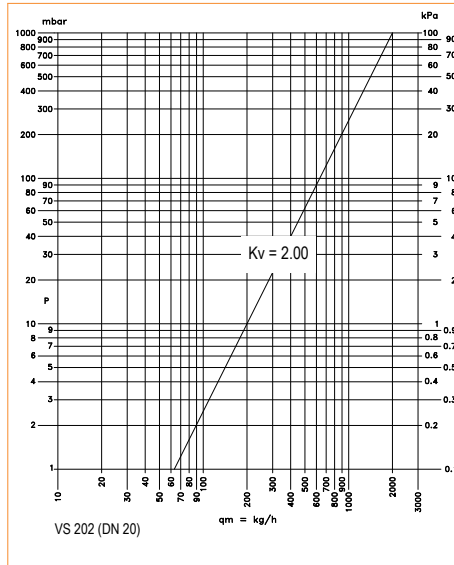
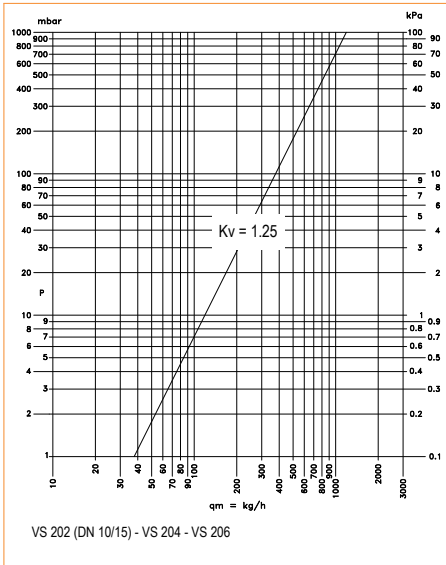
ART.	COD.	SIZE	A	C	D	E	F
VCR 234	501637	M24×1.5	111.5	30	53.5	1/2"	1/2"
VCR 236	501636	EUROKONUS	112.5	30	53.5	M24×1.5	1/2"

■ HYDRAULIC FEATURES

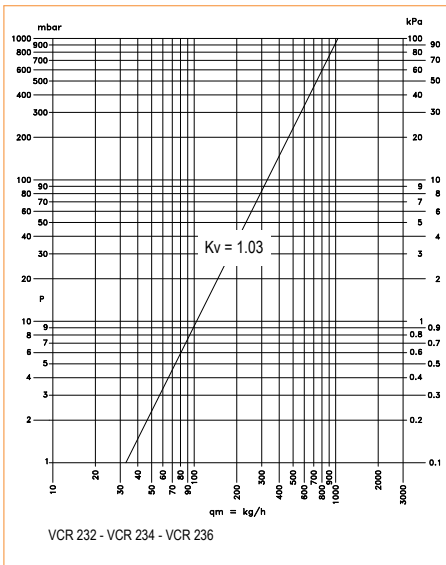
VD 201 - VD 203 - VD 205 - VD 211 - VD 213 - VD 215



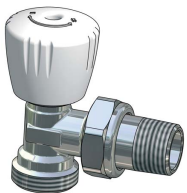
VS 202 - VS 204 - VS 206



VCR 232 - VCR 234 - VCR 236



OPERATING INSTRUCTIONS



In order to regulate the valve correctly, turn the adjustment knob clockwise to decrease the flow rate, or anticlockwise in order to increase it.

■ ACCESSORIES



AGE 01. Soft-seal fitting.

I.V.A.R. S.p.A.
Via IV Novembre 181
25080 Prevalle (BS)
Tel. +39 030 68028
Fax +39 030 6801329
www.ivar.eu - info@ivar.eu

I.V.A.R. S.p.A. reserves the right to make enhancements and changes to products and relative documentation at any time without prior notice. All rights reserved. Reproduction, even partial, is forbidden without prior permission by the copyright owner.