



# FLUXER

## ► AC 674

*Flow meter/adjuster FLUXER with position memory*

### ■ PRESENTATION



FLUXER is a flowmeter suitable for mounting on the flow branches of manifolds: in this way it allows the direct reading of the flow rate during the balancing of the circuit. FLUXER is also characterized by a position memory system, useful not to lose the correct regulation in case of temporary closing of the circuit. The slide with graduated scale can be removed during the functioning of the system thanks to a special sealing system: it is sufficient to close the corresponding circuit and clean or replace the slide before opening it again. FLUXER is predisposed for the insertion of anti-tampering devices, such as seals and lead seals.

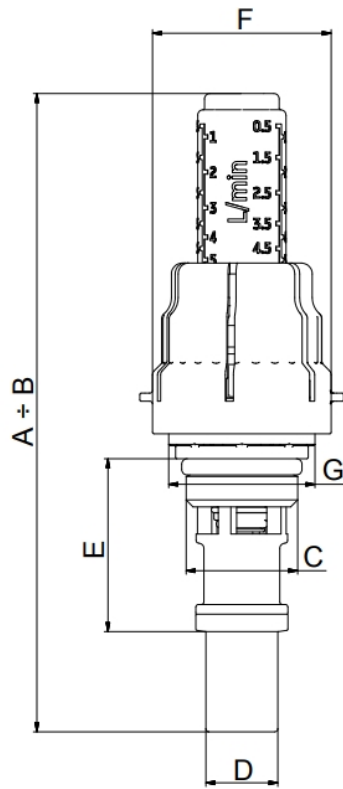
### ■ TECHNICAL DETAILS

Regulation range	0-5 l/min ; 0-2.5 l/min
Accuracy	± 10%
Maximum fluid pressure	10 bar
Maximum fluid temperature	90° C

### ■ MATERIALS

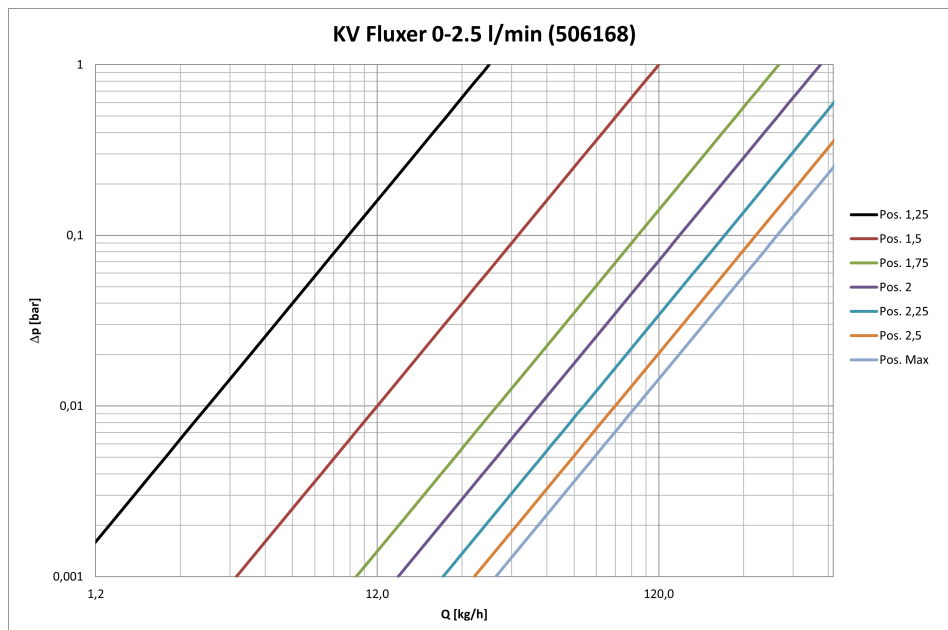
- Body: PPA
- Shatter: PA MXD6
- Gasket: perox EPDM
- Ring nut: Blend di PPO e PS
- Indicator: PA 12
- Rod: PSU
- Glass: PA 12 Transparent
- Cover: ABS

## DIMENSIONS

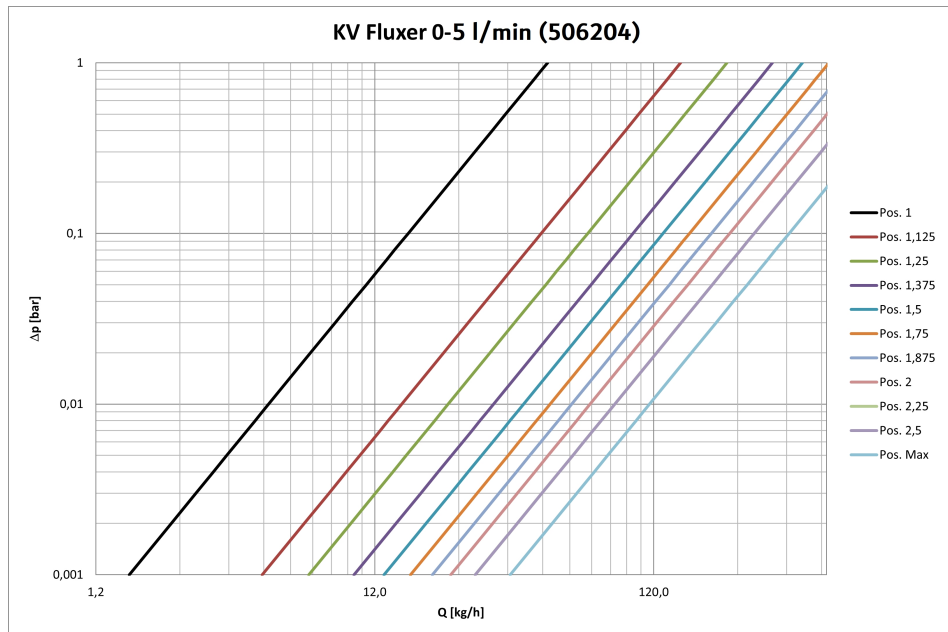


Art.	Cod.	A	B	C	D	E	F	G
AC 674	506168	115,2	118,2	G 1/2"	Φ 13,3	31,9	Φ 33	CH. 27
AC 674	506204	115,2	118,2	G 1/2"	Φ 13,3	31,9	Φ 33	CH.27

## HYDRAULIC FEATURES

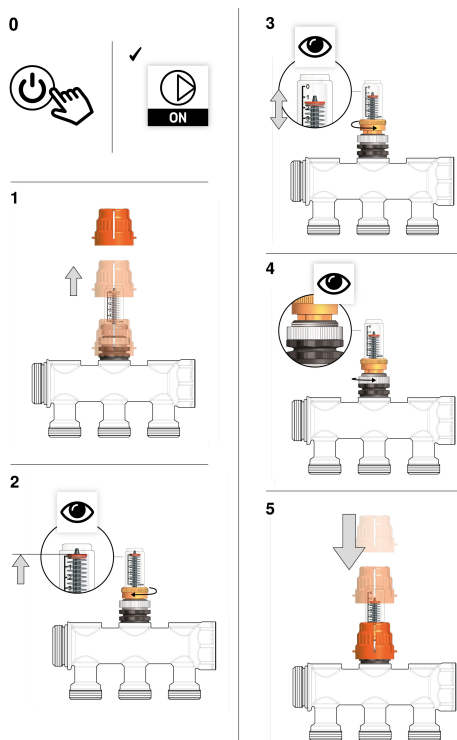


Position	1	2	3	4	5	6	7
Turns	1.25	1.50	1.75	2	2.25	2.5	Open
Kv	0,03	0,12	0,32	0,45	0,65	0,84	1,00



Position	1	2	3	4	5	6	7	8	9	10	11
Turns	1	1.125	1.25	1.375	1.5	1.75	2.0	2.25	2.5	2.75	Open
Kv	0,05	0,15	0,22	0,32	0,41	0,51	0,61	0,71	0,87	1,02	1,16

## ■ OPERATING INSTRUCTIONS



FLUXERs allow the measurement and adjustment of the flow rate of individual branches. They are also equipped with a position memory, useful in case of momentary closure of a branch for maintenance operations.

To make a correct adjustment, act as follows for each circuit:

0. Activate the system.

1. Remove the orange cover.

2. Bring the FLUXER to the closed position by turning the upper ring nut clockwise. The displayed flow rate value must be zero (viewable inside the slide).

3. Bring the FLUXER to the open position corresponding to the correct flow rate value by turning the upper ring nut counterclockwise.

4. Fix the position memory by turning the lower ring nut counterclockwise until it stops.

5. Replace the orange cover. Then it will be possible to close or open the branch up to the maximum set by the position memory, directly turning the orange cover clockwise or counterclockwise respectively.

## ■ SPECIFICATION SUMMARY

**IVAR AC 673 506204:** Flow rate measuring and balancing device with position memory for flow manifold shunts. Adjustment range 0-5 l/min. Connection thread to the branch G 1/2". Height from base of manifold 64.5 mm. Distance between seals 31.9 mm. Body and plug PA MXD6; ring PPA; peroxide EPDM sealing parts; PPO and PS blend locking ring; indicator PA 12; rod PSU; transparent PA 12 glass; ABS cover. Max fluid temperature 90° C. Max fluid pressure 10 bar.

**IVAR AC 673 506168:** Flow rate measuring and balancing device with position memory for flow manifold shunts. Adjustment range 0-2.5 l/min. Connection thread to the branch G 1/2". Height from base of manifold 64.5 mm. Distance between seals 26.8 mm. Body and plug PA MXD6; PPA ring; peroxide EPDM sealing parts; PPO and PS blend locking ring; PA 12 indicator; PSU rod; transparent PA 12 slide; ABS cover. Max fluid temperature 90° C. Max fluid pressure 10 bar.

## ■ CODES

506204	Flow meter/adjuster FLUXER with position memory. Regulation range 0-5 l/min.
506168	Flow meter/adjuster FLUXER with position memory. Regulation range 0-2.5 l/min.

---

### **IVAR S.p.A.**

Via IV Novembre, 181

25080 Prevalle (BS), Italy

T. +39 030 68028 – F. +39 030 68 01 329

info@ivar-group.com – www.ivar-group.com

*IVAR S.p.A. reserves the right to make improvements and changes to the products and related documentation at any time and without notice. All rights reserved. Reproduction in whole or in part is prohibited without the prior consent of the copyright owner.*